

Assignment 1

Due: see course homepage

This assignment will introduce you to the MySQL environment at ITU and the *mysql* command interpreter. You should try to complete it by the due date as this will serve as a basis for future assignments and will give you a taste of SQL before we cover it in detail over the next few weeks.

1. Please log into <http://itu.dk/sysadm/db/> and create your own database. After you have chosen database name, username, and password, the IT Department will send you an email on how to connect to the database.
2. We will be using the *mysql* interpreter that can be found under MacOS or Linux. For Windows machine, you might have to install one yourself. Follow the tutorial <http://dev.mysql.com/doc/refman/5.0/en/tutorial.html> Section 3.1-3.4. Don't worry if you don't understand everything about SQL right now. We will cover SQL in detail later in the course.
3. Consider the family tree of the Danish royal family in Figure 1 rooted in Alexandrina, the dutchess of Mecklenburg-Schwerin and Christian X.
 - (a) Describe the family tree as a facts of the form `son (<person>, <person>, <person>)` and `daughter (<person>, <person>, <person>)`, and `married (<person>, <person>)`.
 - (b) Create a database called `RoyalFamily`, and define and populate a table with content from (a).

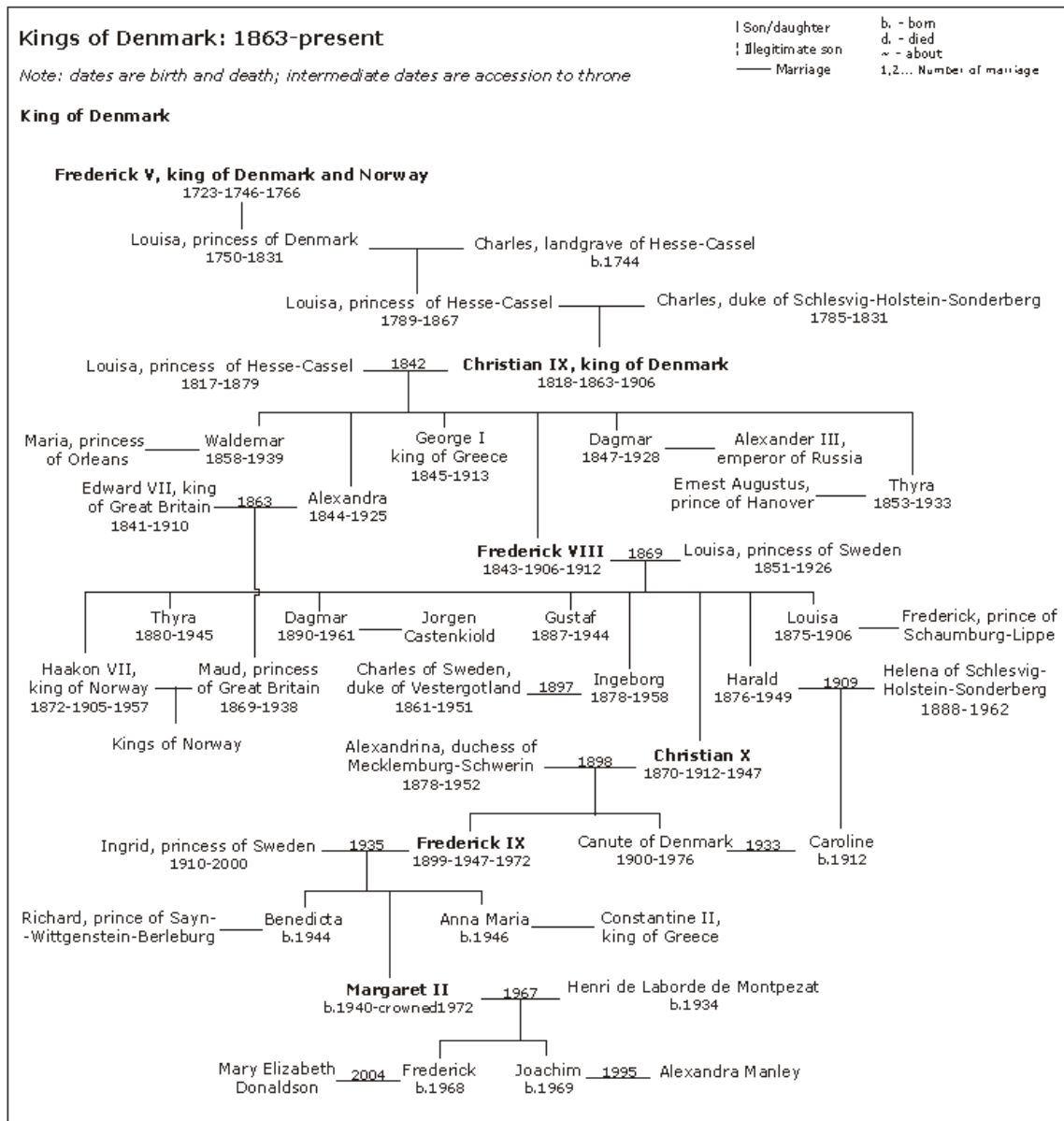


Figure 1: Kings of Denmark